

SF51 THRU SF58



5.0 AMP SUPER FAST RECTIFIERS

FEATURES

- * Low forward voltage drop
- * High current capability
- * High reliability
- * High surge current capability
- * Good for switching mode application

MECHANICAL DATA

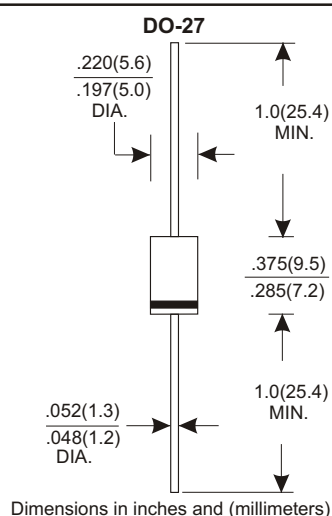
- * Case: Molded plastic
- * Epoxy: UL 94V-0 rate flame retardant
- * Lead: Axial leads, solderable per MIL-STD-202, method 208 guranteed
- * Polarity: Color band denotes cathode end
- * Mounting position: Any
- * Weight: 1.10 grams

VOLTAGE RANGE

50 to 600 Volts

CURRENT

5.0 Amperes



MAXIMUM RATINGS AND ELECTRICAL CHARACTERISTICS

Rating 25°C ambient temperature unieess otherwies specified.
Single phase half wave, 60Hz, resistive or inductive load.
For capacitive load, derate current by 20%.

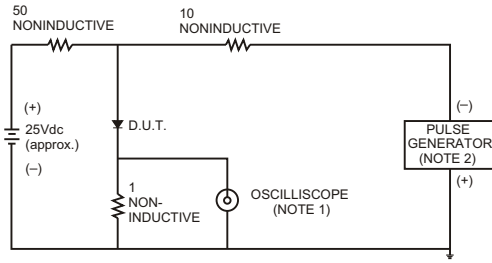
| TYPE NUMBER | SF51 | SF52 | SF53 | SF54 | SF55 | SF56 | SF58 | UNITS |
|-------------------------------------------------------------------------------------------------------|------------|------|------|------|------|------|------|-------|
| Maximum Recurrent Peak Reverse Voltage | 50 | 100 | 150 | 200 | 300 | 400 | 600 | V |
| Maximum RMS Voltage | 35 | 70 | 105 | 140 | 210 | 280 | 420 | V |
| Maximum DC Blocking Voltage | 50 | 100 | 150 | 200 | 300 | 400 | 600 | V |
| Maximum Average Forward Rectified Current .375"(9.5mm) Lead Length at Ta=55°C | 5.0 | | | | | | | A |
| Peak Forward Surge Current, 8.3 ms single half sine-wave superimposed on rated load (JEDEC method) | 150 | | | | | | | A |
| Maximum Instantaneous Forward Voltage at 5.0A | 0.95 | | | 1.25 | | 1.50 | | V |
| Maximum DC Reverse Current Ta=25°C | 5.0 | | | | | | | μA |
| at Rated DC Blocking Voltage Ta=100°C | 50 | | | | | | | μA |
| Maximum Reverse Recovery Time (Note 1) | 35 | | | | | | | nS |
| Typical Junction Capacitance (Note 2) | 50 | | | | | | | pF |
| Operating and Storage Temperature Range Tj, Tstg | -65 — +150 | | | | | | | °C |

NOTES:

- Reverse Recovery Time test condition: IF=0.5A, IR=1.0A, IRR=0.25A
- Measured at 1MHz and applied reverse voltage of 4.0V D.C.

RATING AND CHARACTERISTIC CURVES (SF51 THRU SF58)

FIG.1- TEST CIRCUIT DIAGRAM AND REVERSE RECOVERY TIME CHARACTERISTIC



NOTES: 1. Rise Time= 7ns max., Input Impedance= 1 megohm.22pF.
2. Rise Time= 10ns max., Source Impedance= 50 ohms.

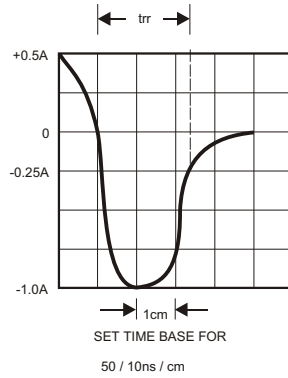


FIG.2-TYPICAL FORWARD CURRENT DERATING CURVE

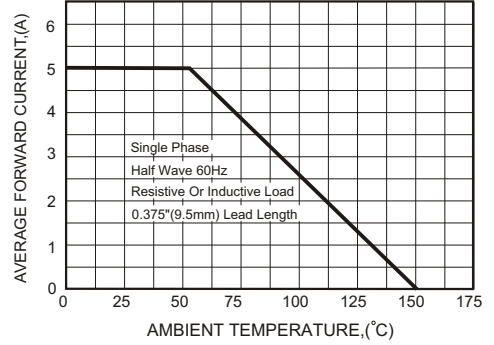


FIG.3-TYPICAL FORWARD CHARACTERISTICS

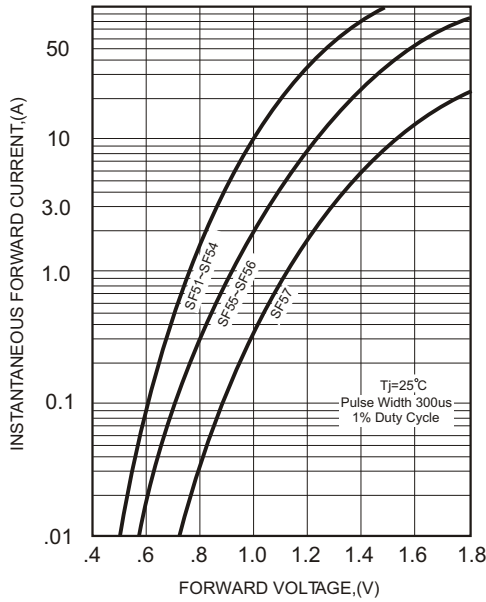


FIG.4-TYPICAL REVERSE CHARACTERISTICS

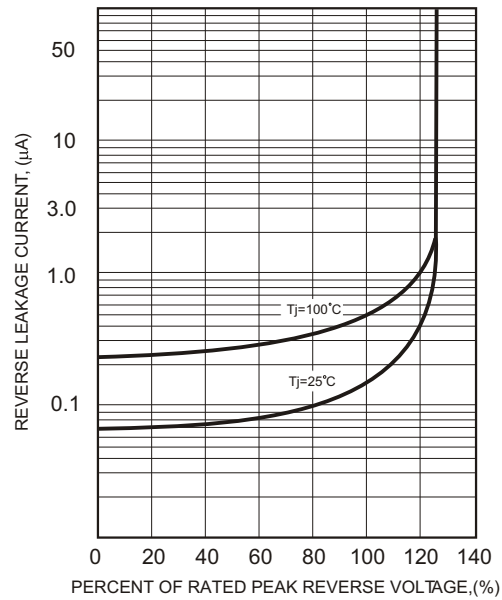


FIG.5-MAXIMUM NON-REPETITIVE FORWARD SURGE CURRENT

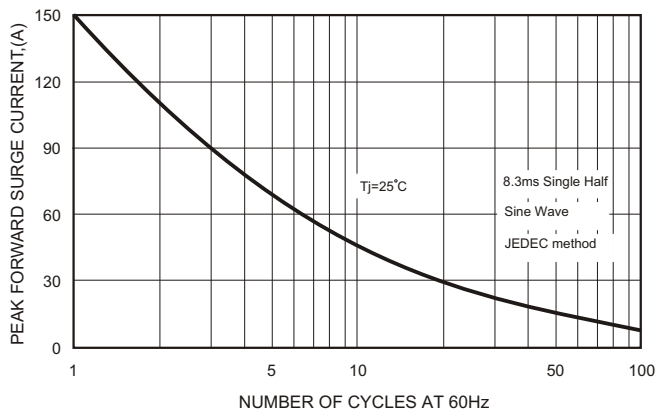


FIG.6-TYPICAL JUNCTION CAPACITANCE

